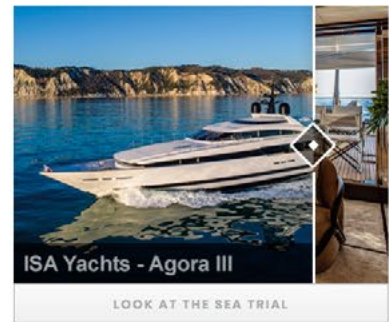
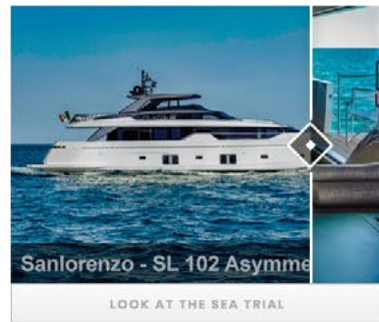
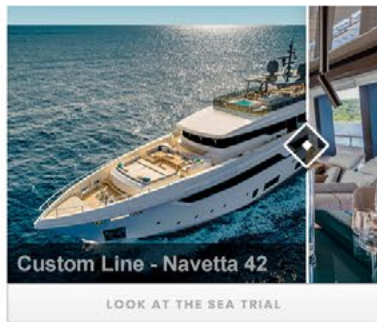
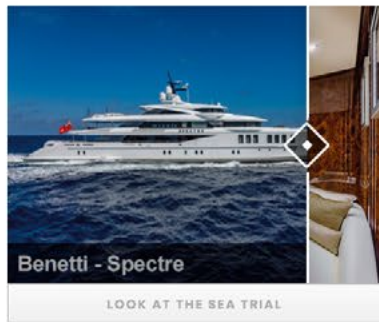




## The recently published yachts

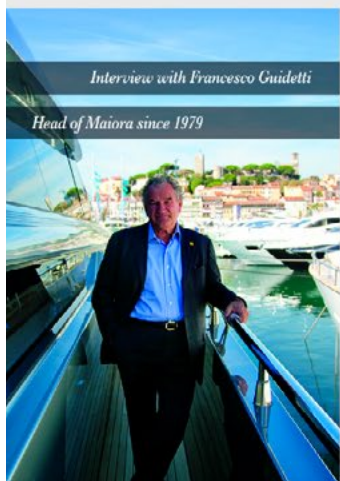
A selection of the most famous yachts and the most interesting projects taken from the magazine's articles

[READ ALL THE SUPERYACHT SEA TRIALS](#)



## The most popular Personas

Articles and Interviews with important or popular personalities of the superyacht world.





MERCURY  
**LEADERBOARD**  
 Il motore Mercury che vuoi con la formula che preferisci

HOME YACHTS SHIPYARDS TENDER&TOYS

DESIGNERS BOAT SHOWS PERSONAS CONTACT

SuperYacht international



*Azimut Grande S10*

MAXIBANNER - VIDEO



**Leaderboard** 1200x150 px

(1month)	(6months)	(12months)
€ 1.200 net	€ 5.800 net	€ 9.500 net

**Maxibanner plus Video** - 2000x1000 px

(2weeks)	(1month)
€ 2.000 net	€ 3.500 net





## LEADERBOARD - PAGE

### Seanfinity – T4

Two well known entrepreneurs operating in the yachting industry have recently decided to pool together their respective know-how and have presented their new prototype: Seanfinity T4. They're Vincenzo Tuccio founder of TS Drive a company dedicated to the design and production of Top System surface drives, and Gianluca Caputi architect and yacht designer. This all new range focuses on several points: performance, technological innovation, quality material and detailed design.

Seanfinity 4 is a versatile multi- purpose which can easily double as luxury tender for superyachts or as a quick week-ender. Precious materials and a practical layout are just two of the highlights this model offers. There's plenty of open walk around space, a small dining area and a cooker cabinet slot nicely into the cockpit also thanks to opening sections along the topsides which increase the exploitable surface area to more than six square metres. The opening sections open/close at the push of a button.



A luxury tender surely, but also a fast boat with which to spend fun week-ends. In fact the boat is offered with several interior solutions which comprise a large owner bed with bathroom en suite with standing headroom also in the shower unit. Aft in the stern area under the sun bathing platform there's room in which to store water toys, diving gear and more.



\*We've achieved something extra with Seanfinity T4, putting together beauty and new technology, intelligent well found solutions and a styling that never is for

#### TECHNICAL DATA

LOA: 14,80 m - Beam: 4,40/5,42 m - Dry displacement: 6,5 tons - Fuel tank capacity: 1,500 litres - Water tank capacity: 200 litres - Berths: 2+2 - Engines: 2x400 HP FTP+TS Surface Drive; 2x570 HP FTP+TS Surface Drive; 2x300 HP Volvo Penta DP; 2x400 HP Mercury Verado; 2x400 HP Mercury Verado; 4x400 HP Mercury Verado - Top speed declared: from 35 to over 60 knots - Project: CaputiStudio/TS Drive.

ADV 1

ADV 2

ADV 3

### Leaderboard Page 728x90 px

(1month)	(6months)	(12months)
€ 1.200 net	€ 5.800 net	€ 9.500 net

### ADV1-ADV2 300x250 px

### ADV3 300x600 px

(1month)	(6months)	(12months)	(1month)	(6months)	(12months)
€ 800 net	€ 3.600 net	€ 4.800 net	€ 1.000 net	€ 5.400 net	€ 9.300 net



**Site-in-site article € 2500 net (1 year)**



## The most popular Personas

Articles and interviews with important or popular personalities of the superyacht world.



Look at

## Tender & Toys



you can find everything (tenders, entertainment, games and accessories) that makes life comfortable or very pleasant

NEWS Facebook

YACHTS

SHIPYARDS

TENDER&TOYS

DESIGNERS

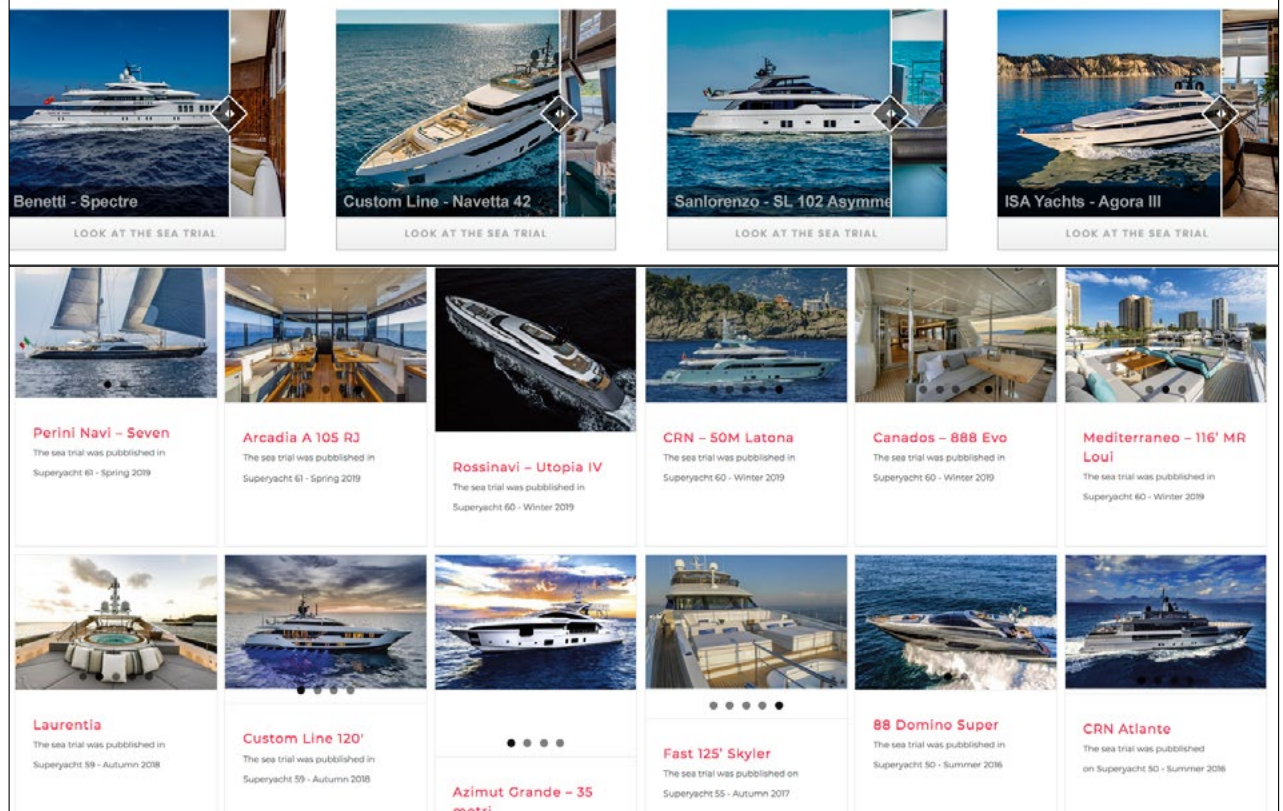
BOAT SHOWS

PERSONAS

## The recently published yachts

A selection of the most famous yachts and the most interesting projects taken from the magazine's articles

READ ALL THE SUPERYACHT SEA TRIALS



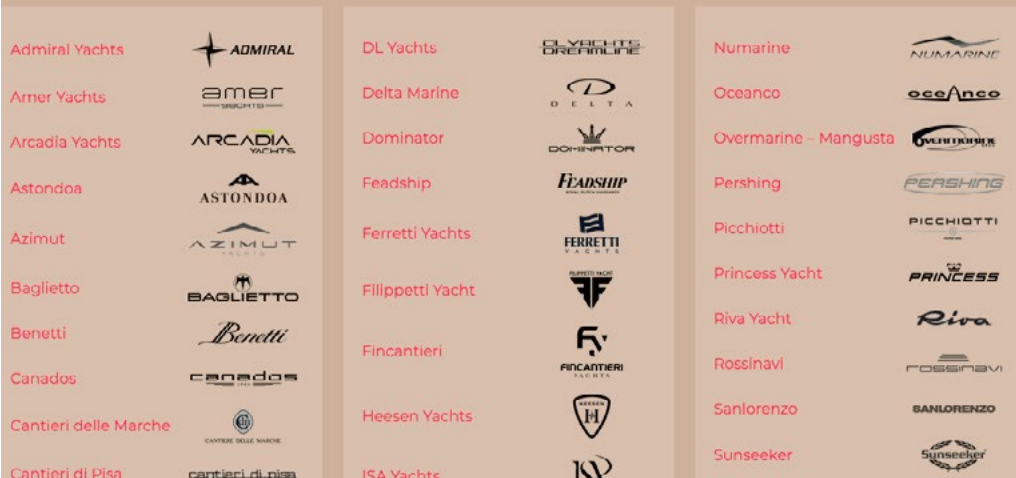
## Shipyards

Section dedicated to those shipyards, all over the world, that have published the sea trials with Superyacht

Motor Yachts

Motor Yachts

Motor Yachts



Superyach.eu - 150/230 visit/day

Superyacht Facebook - 4.650 followers

The new **web Superyacht team**

is here to assist you every time in setting up your advertising plans and banners accordingly so that they best comply to the needs of "responsive technology". Don't hesitate. Just contact us!

Direction - Editing

Via Tevere, 44 - 00198 Roma

Tel. 06.8413060